



South End

Croydon, CR0 1BE

£1,300 Per month

TOWN CENTRE. A one-bedroom flat is available to rent in South Croydon. Close to restaurants and bars, this bright and spacious newly decorated apartment is situated in a convenient location to access transport links. With large windows looking onto South End, this property is ideal for commuters.

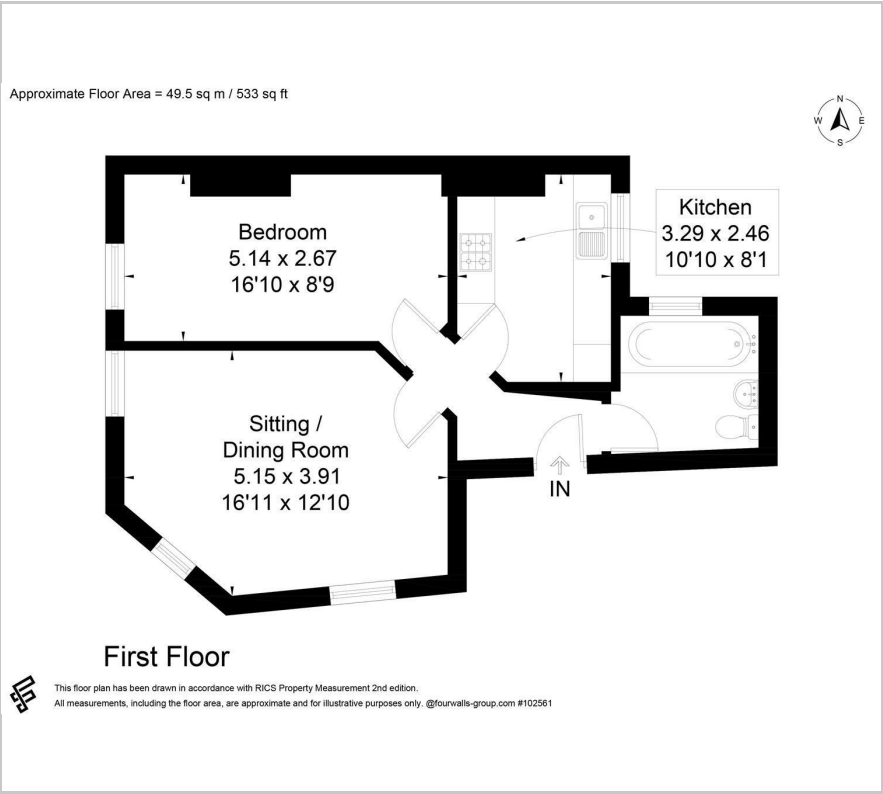
- * Close to restaurants
- * Convenient transport links
- * Newly decorated
- * Spacious living area
- * Tax Band C

Viewing

Please contact our Birdhouse Surrey Office on 02087737730 if you wish to arrange a viewing appointment for this property or require further information.



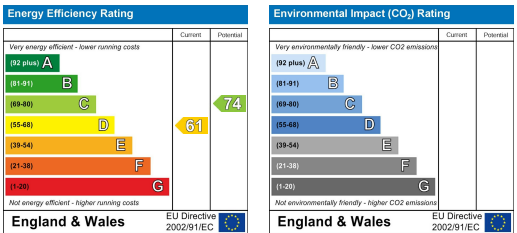
Floor Plan



Area Map



Energy Efficiency Graph



These particulars, whilst believed to be accurate are set out as a general outline only for guidance and do not constitute any part of an offer or contract. Intending purchasers should not rely on them as statements of representation of fact, but must satisfy themselves by inspection or otherwise as to their accuracy. No person in this firm's employment has the authority to make or give any representation or warranty in respect of the property.